

Perfectly Pear-fect Fun Fold Card Tutorial

From Perfectly Pear-fect Blog Post of 7-20-2025

www.JuliaSuesStamping.com

Julia Sue's Stamping
PASSIONATE ABOUT STAMPING,
COLORING, CREATING PAPER
CRAFTS/CARDS AND SHARING THAT
FUN WITH YOU

Please do not share this tutorial or post this project as
your own online

All Rights Reserved ©Julia Sager

Julia Sue's Stamping 2025

www.JuliaSuesStamping.com

Follow me online for more cardmaking ideas and
inspiration

Supplies Needed:

- **Cardstock/DSP:** Basic White, Mossy Meadow, Painterly Pears DSP
- **Stamp Set/Dies:** *Perfectly Pears*, *Stylish Shapes* (largest circle)
- **Ink:** Mossy Meadow Classic Stampin' Pads
- **Other:** Mossy Meadow & Gold Ribbon, Low-Profile Sparkle Dots
- **Tools & Adhesives:** Stampin' Seal Adhesive, Cut & Emboss Die Cutting Machine, Acrylic Blocks, Multipurpose Liquid Glue or adhesive of choice, Stampin' Dimensionals, Scissors, Take Your Pick Tool, Paper Trimmer, Bone Folder

Cutting Measurements:

- **Mossy Meadow:** (card base) 5-1/2" x 8-1/2", scored at 4-1/4" and 2-1/8"; (embossed panel for inside front) 2" x 5-1/4"; scrap for die cutting hashmark
- **Balmy Blue:** (inside card mat) 3-3/4" x 3-3/4"; (mat for explosion card pieces – cut two of these) 2-3/4" x 2-3/4"; (mat for front of card sentiment) 1-3/4" x 5"
- **Basic White:** (inside panel) 3-3/4" x 5"; scraps for die cutting two circles
- **Painterly Pears DSP:** (for inner card) 4" x 11", scored at 5-1/2"; (card front panel) 1-7/8" x 5-1/4"; (accent strip for inside card) 1/2" x 3-3/4"; pears and leaves to die cut



- **Ribbon:** Approx. 8–10" of Mossy Meadow & Gold Ribbon to be arranged in an S-curve behind the large pear die cut

Instructions:

1. Score and fold the Mossy Meadow card base at 4-1/4" and again at 2-1/8" to create a tri-panel effect on the front.
2. Score the 4" x 11" DSP piece at 5-1/2" and fold to create a top-folded inner card. Adhere this inside the Mossy Meadow card base with the fold at the top.
3. Adhere the 3-3/4" x 5" Basic White panel to its Mossy Meadow mat and attach to the inside of the DSP card. Add the 1/2" x 3-3/4" DSP strip to the bottom of the white panel.
4. Emboss the 2" x 5-1/4" Mossy Meadow cardstock with the Mini Corrugated 3D Embossing Folder and adhere it to the left front flap of the card base.
5. Attach the 1-7/8" x 5-1/4" DSP strip to the outer left panel of the card front.
6. Die cut two large circles using the Stylish Shapes Dies. Stamp "Hello" on one and "A Good Friend Is a Gift" on the other using Mossy Meadow ink.
7. Glue Mossy Meadow hashmarks over the "Hello" sentiment. Adhere only the left half of this circle to the front DSP so it overlaps the front of the folded DSP card.
8. Align the second circle underneath the first one and adhere it to the front of the DSP card so it's revealed only when the card opens.
9. Add the two small pears to the inside circle, around the sentiment.
10. Die cut one large pear and leaves, then attach the ribbon behind it in an S-curve using adhesive. Pop up the pear with dimensionals and adhere it overlapping the front sentiment circle.
11. Finish the card by adding three Darling Duckling Sparkle Dots around the "Hello" sentiment, hashtag, and pear.





Be sure to check out the **video tutorial** for a step-by-step walkthrough if you'd like to craft along with me! Video link - https://youtube.com/shorts/01-5BH_GDYc

Additional Tips:

- This card works for any type of DSP, coordinating cardstocks and inks you have on hand.
- When layering the ribbon behind the pear, add adhesive to the back of the pear first and lightly tack the ribbon into place before committing—it gives you flexibility to get the shape just

right.

- If your DSP has directional patterns, make sure your folds and orientations are aligned so nothing ends up upside down when the card is opened.

Supply List

Julia Sager

julia@juliasuesstamping.com

JuliaSuesStamping.com



[Perfectly Pears Bundle \(English\) - 166154](#)

Price: \$42.25



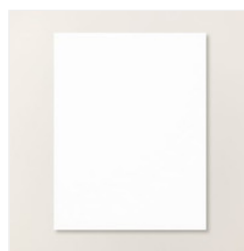
[Painterly Pears 12" X 12" \(30.5 X 30.5 Cm\) Designer Series Paper - 166146](#)

Price: \$12.50



[Mossy Meadow 8-1/2" X 11" Cardstock - 133676](#)

Price: \$14.00



[Basic White 8-1/2" X 11" Cardstock - 166780](#)

Price: \$14.00



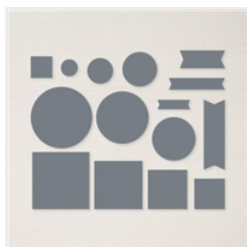
[Mossy Meadow Classic Stampin' Pad - 147111](#)

Price: \$9.00



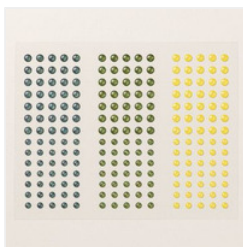
[Mossy Meadow & Gold 1/4" \(6.4 Mm\) - 166158](#)

Price: \$9.50



[Stylish Shapes Dies - 159183](#)

Price: \$30.00



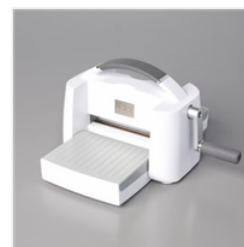
[Low Profile Sparkle Dots - 166157](#)

Price: \$9.50



[Take Your Pick - 144107](#)

Price: \$12.00



[Stampin' Cut & Emboss Machine - 149653](#)

Price: \$140.00



[Paper Trimmer - 152392](#)

Price: \$28.00



[Bone Folder - 102300](#)

Price: \$8.00



[Stampin' Seal - 152813](#)

Price: \$8.00



[Multipurpose Liquid Glue - 110755](#)

Price: \$6.00



[Stampin' Dimensionals - 104430](#)

Price: \$4.25