

Diagonal Cut Card Tutorial

From the Diagonal Cut Magic: Autumn Warmth & Peaceful Blues *Blog Post of 9-30-2025*

www.JuliaSuesStamping.com



Please do not share this tutorial or post this project as your own online

All Rights Reserved ©Julia Sager

Julia Sue's Stamping 2025

www.JuliaSuesStamping.com

Follow me online for more cardmaking ideas and inspiration

Supply List:

- **Cardstock/DSP:** Very Vanilla and Early Espresso cardstocks; Autumn Toile Designer Series Paper (DSP) and Gold Foil
- **Stamps/Dies & Ink:** Amber Autumn stamp set and coordinating die cuts; Early Espresso Classic Stampin' Pad; Darling Duckling, Pumpkin Pie and Crumb Cake Stampin' Blends
- **Adhesives & Tools:** Paper Trimmer, Bone Folder, acrylic blocks, Adhesives of choice (glue, tape roller, glue dots), Dimensionals, Cut & Emboss Machine, grid paper (to protect your work surface while coloring), and Birch Wood 3D Embossing Folder



Instructions for Amber Autumn Card: (all measurements are in inches)

1. Cut **Very Vanilla cardstock** to 4-1/4" x 11". Score at 5-1/2" and fold in half for your card base.
2. Stamp the **acorn with leaves** image from the *Amber Autumn* stamp set in **Early Espresso ink** near the bottom of the card front. Die cut the stamped image.
3. With the die cut removed, trim the **card front diagonally** from the lower left area of the card front up to the upper right side so that the die cut area is now gone, leaving an angled front.
4. Stamp your chosen **sentiment** on the angled card front using **Early Espresso ink**.
5. Color the die cut **acorn with leaves** using **Stampin' Blends** in **Crumb Cake, Pumpkin Pie, and Darling Duckling**.



Very Vanilla. Stamp and color a few leaves in the lower and upper right-hand corners. Add a coordinating sentiment to complete the card.

6. Run a panel of **Gold Foil** (4-1/4" x 5-1/2") through the **Cut & Emboss Machine** with the *Birch Wood 3D Embossing Folder*.
7. Apply strong adhesive to the back of the angled **card front**, then carefully adhere the **Gold Foil panel** inside the card so it shows through the diagonal cut when the card is closed.
8. Adhere a skinny **1/8" strip of Early Espresso checked DSP** (from the *Autumn Toile* pack) along the Very Vanilla edge, close to the Gold Foil, to conceal the seam and add visual interest.
9. Attach the **colored die cut acorn with leaves** to the card front with dimensionals.
10. For the inside, layer a panel of **Early Espresso cardstock** with a piece of

Supply List:

- **Cardstock/DSP:** Cloud Cover, Basic White, Secret Sea cardstocks; Peaceful Garden Designer Series Paper (DSP) and Peaceful Garden Glimmer Paper
- **Stamps/Dies & Ink:** Peace on Earth stamp set and Coordinating Die Cuts; Secret Sea Classic Stampin' Pad
- **Adhesives & Tools:** Paper Trimmer, Bone Folder, acrylic blocks, Adhesives of choice (glue, tape roller, glue dots), Dimensionals, and Cut & Emboss Machine



Instructions for Peace on Earth Card: (all measurements are in inches)

1. Cut **Cloud Cover cardstock** to 4-1/4" x 11". Score at 5-1/2" and fold in half for your card base.
2. Die cut the birds from the Cloud Cover card base.

3. With the die cut removed, trim the **card front diagonally** from the lower left area of card front up to an upper right area so that the die cut area is now gone, leaving an angled front.



4. Apply adhesive to the back of the angled **card front**, then carefully adhere the **Peaceful Garden DSP panel** (4-1/4" x 5-1/2") inside the card so it shows through the diagonal cut when the card is closed.
5. Adhere a skinny **1/8" strip of Gray Glimmer Paper** along the Cloud Cover edge, close to the DSP, to conceal the seam and add visual interest.
6. Attach the **die cut birds** to the card front with dimensionals.
7. For the inside, layer a panel of **Secret Sea cardstock** (3-7/8" x 5-1/8") with a piece of **Basic White** (3-3/4" x 5"). Adhere a strip of coordinating DSP (1/2" x 3-3/4") along the base of the Basic White cardstock inside the card.

Follow along with the video: <https://youtu.be/ggqUSvXvpJ0>

Tips from the Craft Table:

- **Use extra adhesive with foil.** Gold Foil and other specialty papers can resist sticking, so apply strong adhesive or even Tear & Tape along the card front edges to keep everything smooth and secure.
- **DSP strip = magic.** That skinny 1/8" strip isn't just decorative—it's a great way to hide seams and make your project look polished.

Supply List

Julia Sager

julia@julasuesstamping.com

JuliaSuesStamping.com



[Amber Autumn Cling Stamp Set \(English\) - 165883](#)

Price: \$23.00



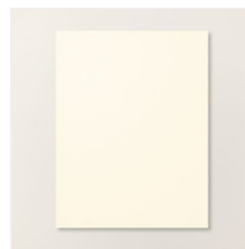
[Amber Autumn Dies - 165892](#)

Price: \$35.00



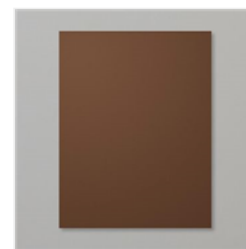
[Autumn Toile 12" X 12" \(30.5 X 30.5 Cm\) Designer Series Paper - 165882](#)

Price: \$12.50



[Very Vanilla 8-1/2" X 11" Cardstock - 166784](#)

Price: \$14.00



[Early Espresso 8-1/2" X 11" Cardstock - 119686](#)

Price: \$14.00



[Gold Foil Sheets - 132622](#)

Price: \$5.00



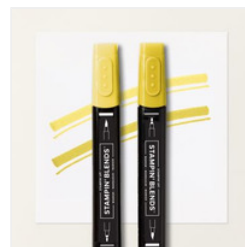
[Early Espresso Classic Stampin' Pad - 147114](#)

Price: \$9.00



[Crumb Cake Stampin' Blends Combo Pack - 154882](#)

Price: \$11.00



[Darling Duckling Stampin' Blends Combo Pack - 165288](#)

Price: \$11.00



[Pumpkin Pie Stampin' Blends Combo Pack - 154897](#)

Price: \$11.00



[Birch Wood 3D Embossing Folder - 164069](#)

Price: \$12.00



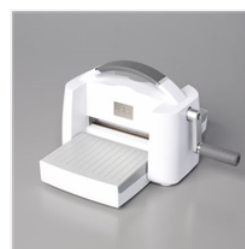
[Bone Folder - 102300](#)

Price: \$8.00



[Paper Trimmer - 152392](#)

Price: \$28.00



[Stampin' Cut & Emboss Machine - 149653](#)

Price: \$140.00



[Grid Paper - 130148](#)

Price: \$13.00

Supply List

Julia Sager

julia@julasuesstamping.com

JuliaSuesStamping.com



[Stampin' Seal -
152813](#)

Price: \$8.00



[Multipurpose
Liquid Glue -
110755](#)

Price: \$6.00



[Stampin'
Dimensionals -
104430](#)

Price: \$4.25



[Peace On Earth
Photopolymer
Stamp Set
\(English\) - 165918](#)

Price: \$19.00



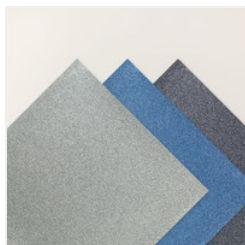
[Peace On Earth
Dies - 165924](#)

Price: \$24.00



[Peaceful Garden
12" X 12" \(30.5 X
30.5 Cm\) Designer
Series Paper -
165917](#)

Price: \$12.50



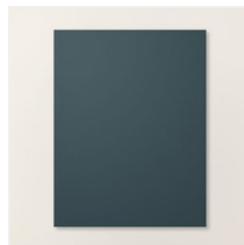
[Peaceful Garden
12" X 12" \(30.5 X
30.5 Cm\) Glimmer
Paper - 165929](#)

Price: \$10.50



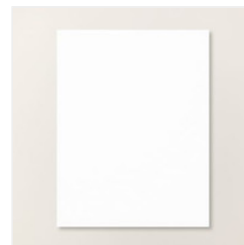
[Cloud Cover 8-1/2"
X 11" Cardstock -
165621](#)

Price: \$14.00



[Secret Sea 8-1/2"
X 11" Cardstock -
165624](#)

Price: \$14.00



[Basic White 8-1/2"
X 11" Cardstock -
166780](#)

Price: \$14.00



[Secret Sea Classic
Stampin' Pad -
165285](#)

Price: \$9.00