

Grateful for Fall Colors Card Tutorial

From the Grateful for Fall Colors

Blog Post of 9-26-2025

www.JuliaSuesStamping.com



Please do not share this tutorial or post this project as your own online

All Rights Reserved ©Julia Sager

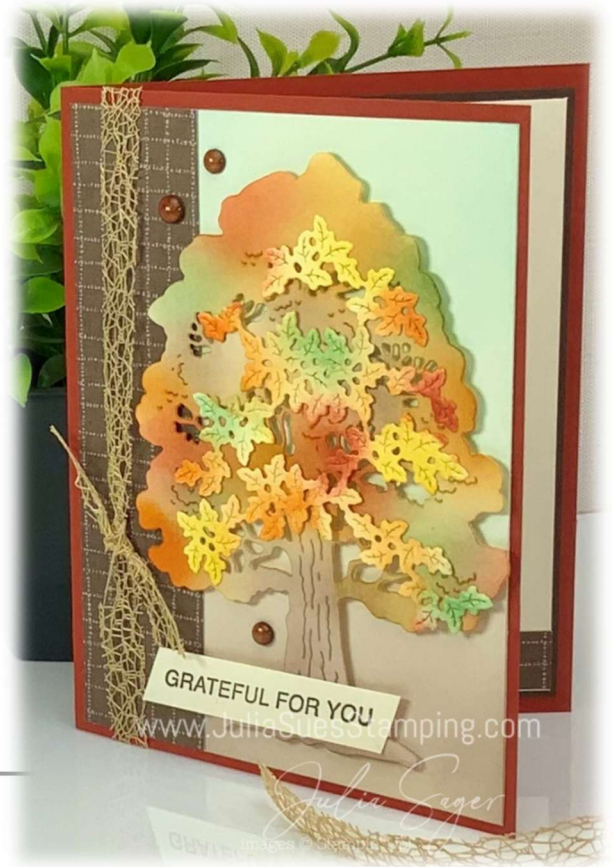
Julia Sue's Stamping 2025

www.JuliaSuesStamping.com

Follow me online for more cardmaking ideas and inspiration

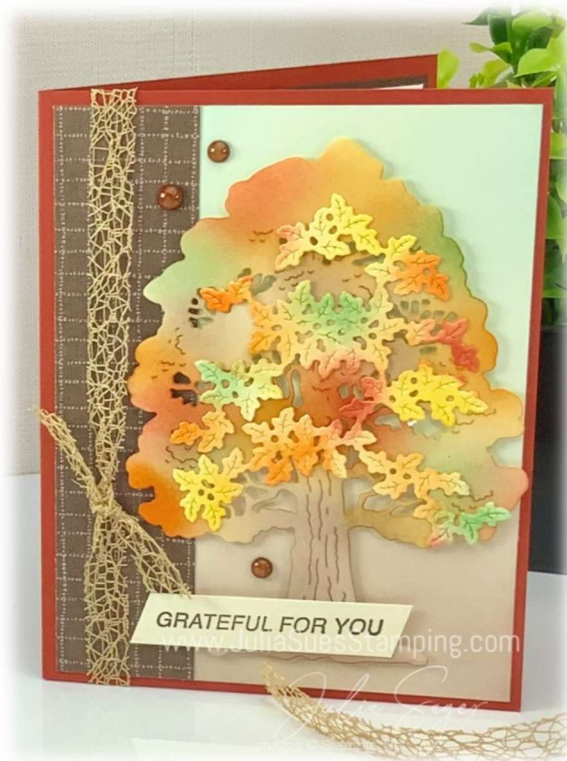
Supply List:

- **Cardstock/DSP:** Very Vanilla, Cajun Craze and Early Espresso cardstocks; Autumn Toile Designer Series Paper (DSP)
- **Stamps/Dies & Ink:** Amber Autumn stamp set; Autumn Trees Die Cuts; Early Espresso, Garden Green, Crushed Curry, Cajun Craze, and Pumpkin Pie Classic Stampin' Pads
- **Adhesives & Tools:** Paper Trimmer, Bone Folder, acrylic blocks, Adhesives of choice (glue, tape roller, glue dots), Dimensionals, Scissors, Cut & Emboss Machine, grid paper, Blending Brushes, and Take Your Pick Tool
- **Embellishments:** Irregular Weave Trim, Streaked Dots



Instructions: (all measurements are in inches)

1. Cut Cajun Craze cardstock to 5-1/2" x 8-1/2". Score and fold at 4-1/4" for the card base.
2. Cut Very Vanilla cardstock to 4" x 5-1/4". Blend Balmy Blue and Early Espresso inks lightly across the panel with Blending Brushes to create the background panel. Adhere the blended background panel to the Cajun Craze card base.



3. Die cut the large tree and leaves from Very Vanilla cardstock using the Autumn Trees dies.
4. Use Blending Brushes to color the die cuts: blend Garden Green, Early Espresso, Cajun Craze, Crushed Curry, and Pumpkin Pie inks onto the tree and leaves.
5. Cut a strip of Autumn Toile DSP (Early Espresso plaid design) to 1-1/4" x 5-1/4". Adhere to the left side of the background panel on the card front.
6. Wrap Irregular Weave Trim around the card front, over the DSP panel, and tie it into a knot. Trim ends neatly.
7. Attach the inked tree to the card front with dimensionals.
8. Adhere the inked leaves onto the tree branches with liquid adhesive.
9. Stamp the sentiment "Grateful for

You" in Early Espresso ink on a 1/2" x 4" strip of Very Vanilla cardstock. Trim ends at an angle. Adhere to the card front.

10. Embellish with three Streaked Dots on the card front.

11. For the inside: cut Very Vanilla cardstock to 3-3/4" x 5". Cut Early Espresso cardstock to 3-7/8" x 5-1/8" and adhere behind the Very Vanilla as a mat. Add a strip of Autumn Toile DSP (1/2" x 3-3/4") to the bottom of the Very Vanilla panel. Adhere inside the card.

Follow along with the video: <https://youtube.com/shorts/g9-Xie3cS1U>

Tips from the Craft Table:

- When blending inks onto your die cuts, start off the edge of your scrap paper and build the color slowly in light layers. This prevents harsh lines and gives you that soft, natural autumn look.
- To keep your trim ends neat, cut them at an angle after tying the knot. This helps prevent fraying and makes the knot look polished.

Supply List

Julia Sager

julia@julasuesstamping.com

JuliaSuesStamping.com



[Amber Autumn Cling Stamp Set \(English\) - 165883](#)

Price: \$23.00



[Autumn Toile 12" X 12" \(30.5 X 30.5 Cm\) Designer Series Paper - 165882](#)

Price: \$12.50



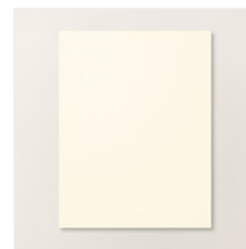
[Autumn Trees Dies - 165899](#)

Price: \$38.00



[Cajun Craze 8-1/2" X 11" Cardstock - 119684](#)

Price: \$14.00



[Very Vanilla 8-1/2" X 11" Cardstock - 166784](#)

Price: \$14.00



[Early Espresso 8-1/2" X 11" Cardstock - 119686](#)

Price: \$14.00



[Early Espresso Classic Stampin' Pad - 147114](#)

Price: \$9.00



[Cajun Craze Classic Stampin' Pad - 147085](#)

Price: \$9.00



[Crushed Curry Classic Stampin' Pad - 147087](#)

Price: \$9.00



[Garden Green Classic Stampin' Pad - 147089](#)

Price: \$9.00



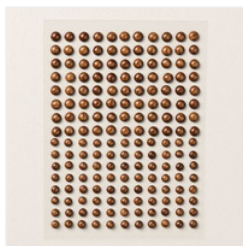
[Pumpkin Pie Classic Stampin' Pad - 147086](#)

Price: \$9.00



[Irregular Weave 3/8" \(1 Cm\) Trim - 165903](#)

Price: \$9.00



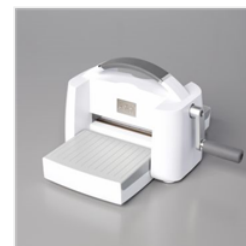
[Streaked Dots - 165902](#)

Price: \$9.00



[Grid Paper - 130148](#)

Price: \$13.00



[Stampin' Cut & Emboss Machine - 149653](#)

Price: \$140.00

Supply List

Julia Sager

julia@julasuesstamping.com

JuliaSuesStamping.com



[Take Your Pick -](#)
[144107](#)

Price: \$12.00



[Bone Folder -](#)
[102300](#)

Price: \$8.00



[Blending Brushes -](#)
[153611](#)

Price: \$15.00



[Paper Trimmer -](#)
[152392](#)

Price: \$28.00



[Multipurpose](#)
[Liquid Glue -](#)
[110755](#)

Price: \$6.00



[Stampin' Seal -](#)
[152813](#)

Price: \$8.00



[Stampin'](#)
[Dimensionals -](#)
[104430](#)

Price: \$4.25