

# Vellum Cardmaking Tutorial

from the *Vellum Cardmaking Made Easy*  
Blog Post of 12-30-2025

[www.JuliaSuesStamping.com](http://www.JuliaSuesStamping.com)



Please do not share this tutorial or post this project as your own online

All Rights Reserved ©Julia Sager

Julia Sue's Stamping 2025

[www.JuliaSuesStamping.com](http://www.JuliaSuesStamping.com)

Follow me online for more cardmaking ideas and inspiration

## CARD 1 – Dry Embossed Vellum Background Card

### SUPPLY LIST

**Cardstock & DSP** - Pretty Peacock cardstock (card base), Lost Lagoon cardstock (mat), Basic White cardstock, Nature Walk Designer Series Paper (Crumb Cake grid pattern; Pretty Peacock & Lost Lagoon pattern), Vellum Specialty Paper

**Stamps** - Friendly Foliage stamp set

**Die Cuts** – Petals of Beauty Large foliage dies

**Embossing Folders** - Birch Wood 3D Embossing Folder

**Inks** - Pretty Peacock Ink Pad

**Adhesives** - Liquid glue, Stampin' Dimensionals, Adhesives of Choice

**Tools** – Bone Folder, Acrylic Blocks, Stampin' Cut & Emboss Machine, Paper Trimmer, Sponge Dauber, Silicone Craft Sheet, Take Your Pick Tool

**Embellishments** - Faceted Gems Trio Pack (Lost Lagoon)



### INSTRUCTIONS: (all measurements in inches)

1. Cut Pretty Peacock cardstock to **4-1/4 x 11**, score and fold at **5-1/2** to create the card base.
2. Cut vellum to **4 x 5-1/4** and dry emboss using the Birch Wood 3D Embossing Folder. Use the correct 3D embossing plate combination.

3. Lightly apply liquid glue onto a Silicone Craft Sheet. Use a Sponge Dauber to spread a very thin layer of glue onto the back of the vellum.
4. Adhere the vellum panel to the card front, smoothing gently.
5. Cut Nature Walk DSP (Crumb Cake grid) to **1 x 5-1/4** and adhere along the left side of the card front.
6. Cut Lost Lagoon cardstock to **3 x 4-1/2** and adhere the coordinating DSP cut **1/8 inch smaller** on all sides.
7. Adhere the matted DSP panel slightly right of center on the card front.
8. Die cut three large foliage pieces from Pretty Peacock, Lost Lagoon, and Coastal Cabana cardstock. Arrange over the matted DSP and secure with adhesive.
9. Stamp the sentiment “Thinking of You” from Friendly Foliage in Pretty Peacock ink onto Basic White cardstock cut to **7/8 x 2-3/4**. Trim the ends at angles.
10. Adhere the sentiment over the foliage stems using Stampin’ Dimensionals.
11. Add three Lost Lagoon Faceted Gems using the Take Your Pick Tool.
12. Inside the card: adhere a Basic White panel cut **3-3/4 x 5** onto a Lost Lagoon mat cut **3-7/8 x 5-1/8**. Adhere the layered panels inside the card.

## CARD 2 – Heat Embossed Vellum Sentiment Card



### SUPPLY LIST:

**Cardstock & DSP** - Basic Black cardstock (card base), Cherry Cobbler cardstock, Basic White cardstock, Nests of Winter Designer Series Paper, Vellum Specialty Paper

**Stamps** - With You in Mind stamp set

**Inks** - VersaMark Ink Pad

**Embossing Powders** - Silver Metallics WOW! Embossing Powder

**Adhesives** - Liquid glue, Stampin’ Dimensionals, Adhesives of Choice

**Tools** - Heat Tool, Bone Folder, Acrylic Blocks, Embossing Additions Tool Kit, Sponge Dauber (dedicated for glue), Paper Trimmer, Take Your Pick Tool

**Embellishments** - Rhinestone Basic Jewels

## INSTRUCTIONS

1. Cut Basic Black cardstock to **5-1/2 x 8-1/2**, score and fold at **4-1/4**.
2. Cut Cherry Cobbler cardstock to **4 x 5-1/4**. Cut Nests of Winter DSP to **3-7/8 x 5-1/8** and adhere to the Cherry Cobbler layer. Adhere layered panels to the card front using Stampin' Dimensionals.
3. Cut vellum to **1-3/4 x 4**. Stamp the sentiment "Thinking of You" from With You in Mind in VersaMark ink onto the vellum.
4. Cover with Silver Metallic embossing powder and heat set using Heat Tool.
5. Apply liquid glue directly to the back of the vellum and spread into a thin, even layer using a Sponge Dauber and protecting your work surface with the Silicone Craft Sheet so you can get up to the edges of the vellum.
6. Adhere the vellum sentiment panel to the card front.
7. Add Rhinestone Basic Jewels to finish the card front.
8. Inside the card: adhere a Basic White panel cut **3-3/4 x 5** onto a Cherry Cobbler mat cut **3-7/8 x 5-1/8**. Adhere the layered panels inside the card.

## CARD 3 – Vellum + Washi Tape Floral Card

### SUPPLY LIST

**Cardstock & DSP** - Basic Beige cardstock (card base), Basic White cardstock, Early Espresso cardstock, Vellum Specialty Paper

**Stamps** - Extraordinary Flora stamp set

**Dies** - Stylish Shapes Dies (largest circle), Extraordinary Flora coordinating dies, Friendly Foliage dies

**Inks** - Early Espresso Ink Pad

**Adhesives** - Liquid glue, Adhesives of Choice

**Tools** - Stampin' Cut & Emboss Machine, Bone Folder, Paper Trimmer, Acrylic Blocks, Scissors, Take Your Pick Tool

**Embellishments** - White Pearls of Beauty

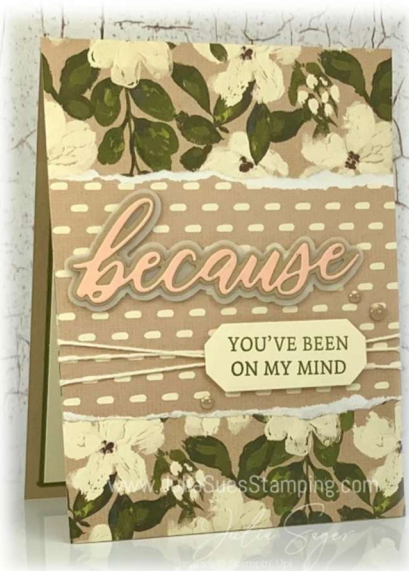
**Specialty** - Extraordinary Flora Washi Tape



## INSTRUCTIONS

1. Cut Basic Beige cardstock to **5-1/2 x 8-1/2**, score and fold at **4-1/4** to create a landscape card. Stamp the entire card front using the Extraordinary Flora stamp set in Early Espresso ink.
  2. Die cut the largest circle from Stylish Shapes using Basic White cardstock. Stamp "With Love" near the bottom of the circle in Early Espresso ink.
  3. Adhere the circle to the card front centered top to bottom, positioned to the right so approximately **1/4 inch** hangs off the edge. Trim off the excess portion of the circle hanging over the edge using scissors.
  4. Adhere Extraordinary Flora Washi Tape onto vellum and die cut using the coordinating dies.
  5. Die cut additional foliage from vellum using the Friendly Foliage dies.
  6. Arrange the vellum florals and foliage onto the die cut circle and adhere in place.
  7. Add five White Pearls of Beauty using the Take Your Pick Tool.
  8. Inside the card: adhere a Basic White panel cut **3-3/4 x 5** onto an Early Espresso mat cut **3-7/8 x 5-1/8**. Adhere the layered panels inside the card.
- 

## Card 4 – Vellum as a Die Cut Layer



Liquid Glue, Adhesives of Choice

### Supplies

**Stamp Set** - Words of Beauty

**Dies** - Words of Beauty

**Paper/DSP** - Crumb Cake cardstock, Very Vanilla cardstock, Mossy Meadow cardstock, Vellum Specialty Paper, Brushed With Beauty DSP (floral + dotted patterns)

**Ink** - Mossy Meadow

**Embellishments** - Crumb Cake Pearls of Beauty and Very Vanilla Baker's Twine (Baker's Twine Essentials Pack)

**Tools** - Take Your Pick Tool, Paper Trimmer, Bone Folder, Acrylic Blocks, Cut & Emboss Machine, Scissors

**Adhesives** - Stampin' Dimensionals, Multipurpose

## Instructions

1. Cut Crumb Cake Cardstock to **4¼" x 11"**. Score at **5½"** and fold to create a top-folding card base.
2. Cut the floral pattern from the Brushed with Beauty DSP to **4¼" x 5½"**. Adhere to card front.
3. Cut dotted pattern DSP to **4¼" x 3½"**. Tear approximately ½" from both top and bottom edges to expose the white core. Adhere this layer centered on the card front.
4. Die-cut the three "because" layers using the Words of Beauty Dies with the Cut & Emboss Machine:
  - Vellum – base layer
  - Crumb Cake – middle layer
  - Petal Pink – top layer

Adhere the three layers together with Multipurpose Liquid Glue or Adhesive Sheets.

5. Add the completed layered sentiment to the center of the dotted DSP using Stampin' Dimensionals.
6. Stamp "You've Been on My Mind" in Mossy Meadow ink on Very Vanilla Cardstock. Die cut the stamped sentiment using the medium-sized label die from the Words of Beauty Dies and the Cut & Emboss Machine.
7. Wrap Very Vanilla Baker's Twine around the card front three times and tie a knot on the right side of the dotted layer. Trim twine close to the knot with scissors.
8. Add the stamped label sentiment over the knot using Stampin' Dimensionals.
9. Add three Crumb Cake Pearls of Beauty around the stamped sentiment.
10. For the inside, cut Very Vanilla Cardstock to **3¾" x 5"** and adhere it to a Mossy Meadow mat measuring **3⅞" x 5⅞"**. Adhere the layered panels inside the card.



## Card 5 – Vellum as a Filter

### Supply List

**Cardstock** – Lost Lagoon cardstock, Thick Basic White cardstock, and Basic White cardstock, Vellum Specialty Paper

**Stamps** – Words of Beauty, Petals of Beauty

**Dies** - Words of Beauty

**Inks** - Lost Lagoon, Calypso Coral, Darling Duckling, Memento Tuxedo Black, Early Espresso, Mossy Meadow, Pecan Pie, Petal Pink

**Tools** – Bone Folder, Scissors, Acrylic Blocks, Take Your Pick tool, Cut & Emboss Machine, Sponge Dauber

**Adhesives** – Liquid Glue, Dimensionals, Adhesives of Choice

**Embellishments** - (White) Pearls of Beauty

### **Instructions**

1. Create the base panel. Cut Thick Basic White cardstock to **4-1/4" x 11"**, score and fold at **5-1/2"** to create a top folding card.
2. Cut Lost Lagoon cardstock to **4" x 5-1/4"**.
3. Cut Basic White cardstock to **3-7/8 x 5-1/8"**. Stamp the Basic White layer with floral elements from the Petals of Beauty stamp set as follows:
  - Largest flower in Petal Pink – center in Memento Black ink;
  - Largest foliage in Lost Lagoon;
  - Smaller flower in Darling Duckling – center in Early Espresso;
  - Flower cluster in Calypso Coral – centers in Pecan Pie;
  - Leaf centers/small foliage in Mossy Meadow.
4. Adhere stamped Basic White panel directly to Lost Lagoon piece. Adhere assembled panels to card front with Dimensionals.
5. Cut Vellum to **3-1/4" x 4-1/2"**. Using the Sponge Dauber, adhere Multipurpose Liquid Glue in the center and all four corners of the Vellum (this makes the glue unnoticeable under the Vellum). Adhere to the center of the card front.
6. Die cut the largest sentiment frame from the Words of Beauty die cuts from Basic White scrap with the Cut & Emboss Machine. With Lost Lagoon ink, stamp the words “Just” and “Because” on scraps of Basic White. Cut down to desired with Paper Trimmer.
7. Stamp “You’re a Great Friend” on the Basic White die cut sentiment frame with Lost Lagoon ink.
8. Adhere the words with Dimensionals on the card front.
9. Add five pearls with the Take Your Pick tool to finish the card front.
10. Cut Basic White cardstock to **3-3/4" x 5"** and Lost Lagoon cardstock to **3-7/8" x 5-1/8"**; adhere together and attach inside card.



Follow along with the video: <https://youtu.be/uB2rpVpaJNl>

#### Tips from the Craft Table:

- **Vellum weight makes a difference.**

Lighter-weight vellum is ideal for layering and wrapping because it stays flexible, while heavier vellum holds up better for dry embossing, heat embossing, and die cutting. If you're unsure which weight you have, always test on a scrap first.

- **Thin adhesive is the secret to invisible results.**

Whether you're sponging glue onto the back or placing adhesive behind an embossed or die-cut area, less really is more. A thin, even layer keeps vellum smooth and prevents adhesive from showing through.

- **Let vellum play a supporting role—or be the star.**

Vellum works beautifully as a soft background, a focal sentiment, or a finishing layer that tones down bold patterns. Deciding its role first will help the rest of the card come together more easily.

# Supply List

Julia Sager

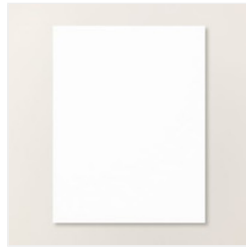
[julia@juliasuesstamping.com](mailto:julia@juliasuesstamping.com)

[JuliaSuesStamping.com](http://JuliaSuesStamping.com)



[Pretty Peacock 8-1/2" X 11" Cardstock - 150880](#)

Price: \$14.00



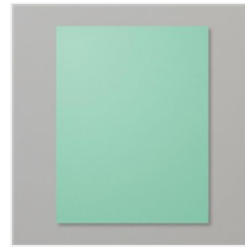
[Basic White 8-1/2" X 11" Cardstock - 166780](#)

Price: \$14.00



[Pretty Peacock Classic Stampin' Pad - 150083](#)

Price: \$9.00



[Coastal Cabana 8-1/2" X 11" Cardstock - 131297](#)

Price: \$14.00



[Lost Lagoon 8-1/2" X 11" Cardstock - 133679](#)

Price: \$14.00



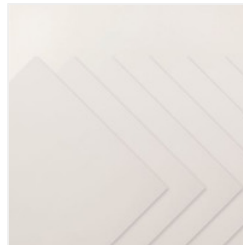
[Friendly Foliage Photopolymer Stamp Set \(English\) - 167021](#)

Price: \$19.00



[Petals Of Beauty Dies - 167095](#)

Price: \$35.00



[Vellum 12" X 12" \(30.5 X 30.5 Cm\) Specialty Paper - 167099](#)

Price: \$10.00



[Birch Wood 3D Embossing Folder - 164069](#)

Price: \$12.00



[Multipurpose Liquid Glue - 110755](#)

Price: \$6.00



[Stampin' Dimensionals - 104430](#)

Price: \$4.25



[Faceted Gems Trio Pack - 162148](#)

Price: \$7.50



[Stampin' Cut & Emboss Machine - 149653](#)

Price: \$140.00



[Paper Trimmer - 152392](#)

Price: \$28.00



[Bone Folder - 102300](#)

Price: \$8.00

# Supply List

Julia Sager

[julia@juliasuesstamping.com](mailto:julia@juliasuesstamping.com)

[JuliaSuesStamping.com](http://JuliaSuesStamping.com)



[Basic Black 8-1/2\"/>  
X 11\" Cardstock -  
121045](#)

Price: \$14.00



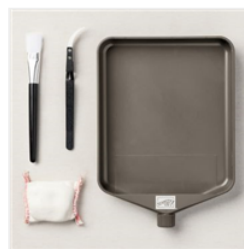
[Cherry Cobbler 8-  
1/2\" X 11\"  
Cardstock -  
119685](#)

Price: \$14.00



[Nests Of Winter  
12\" X 12\" \(30.5 X  
30.5 Cm\) Designer  
Series Paper -  
164183](#)

Price: \$12.50



[Embossing  
Additions Tool Kit -  
159971](#)

Price: \$27.00



[Metallics Wow!  
Embossing  
Powder - 165678](#)

Price: \$21.00



[Rhinstone Basic  
Jewels - 144220](#)

Price: \$6.00



[Take Your Pick -  
144107](#)

Price: \$12.00



[Sponge Daubers -  
133773](#)

Price: \$7.50



[Silicone Craft  
Sheet - 127853](#)

Price: \$6.50



[Heat Tool - 129053](#)

Price: \$32.00



[Basic Beige 8-1/2\"/>  
X 11\" Cardstock -  
164511](#)

Price: \$14.00



[Early Espresso 8-  
1/2\" X 11\"  
Cardstock -  
119686](#)

Price: \$14.00



[Early Espresso  
Classic Stampin'  
Pad - 147114](#)

Price: \$9.00



[Friendly Foliage  
Dies - 167023](#)

Price: \$24.00



[Extraordinary Flora  
Photopolymer  
Stamp Set  
\(English\) - 165243](#)

Price: \$20.00

# Supply List

Julia Sager

[julia@juliasuesstamping.com](mailto:julia@juliasuesstamping.com)

[JuliaSuesStamping.com](http://JuliaSuesStamping.com)



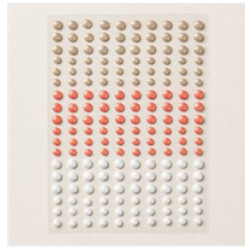
[Extraordinary Flora Die - 165244](#)

Price: \$28.00



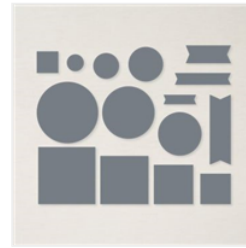
[Extraordinary Flora Washi Tape - 165269](#)

Price: \$15.00



[Pearls Of Beauty - 167098](#)

Price: \$8.00



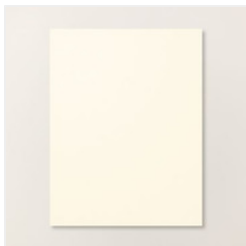
[Stylish Shapes Dies - 159183](#)

Price: \$30.00



[Crumb Cake 8-1/2" X 11" Cardstock - 120953](#)

Price: \$14.00



[Very Vanilla 8-1/2" X 11" Cardstock - 166784](#)

Price: \$14.00



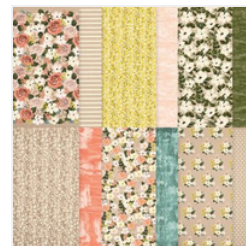
[Mossy Meadow 8-1/2" X 11" Cardstock - 133676](#)

Price: \$14.00



[Mossy Meadow Classic Stampin' Pad - 147111](#)

Price: \$9.00



[Brushed With Beauty 12" X 12" \(30.5 X 30.5 Cm\) Designer Series Paper - 167082](#)

Price: \$12.50



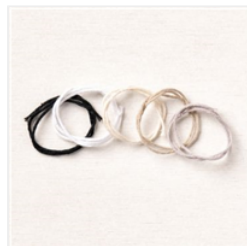
[Words Of Beauty Photopolymer Stamp Set \(English\) - 167083](#)

Price: \$20.00



[Words Of Beauty Dies \(English\) - 167089](#)

Price: \$31.00



[Baker's Twine Essentials Pack - 155475](#)

Price: \$11.00



[Darling Duckling Classic Stampin' Pad - 165277](#)

Price: \$9.00



[Lost Lagoon Classic Stampin' Pad - 161678](#)

Price: \$9.00



[Calypso Coral Classic Stampin' Pad - 147101](#)

Price: \$9.00

# Supply List

Julia Sager

[julia@juliasuesstamping.com](mailto:julia@juliasuesstamping.com)

[JuliaSuesStamping.com](http://JuliaSuesStamping.com)



[Tuxedo Black](#)  
[Memento Ink Pad -](#)  
[132708](#)

Price: \$8.00



[Petal Pink Classic](#)  
[Stampin' Pad -](#)  
[147108](#)

Price: \$9.00



[Petal Pink 8-1/2" X](#)  
[11" Cardstock -](#)  
[146985](#)

Price: \$14.00



[Pecan Pie Classic](#)  
[Stampin' Pad -](#)  
[161665](#)

Price: \$9.00